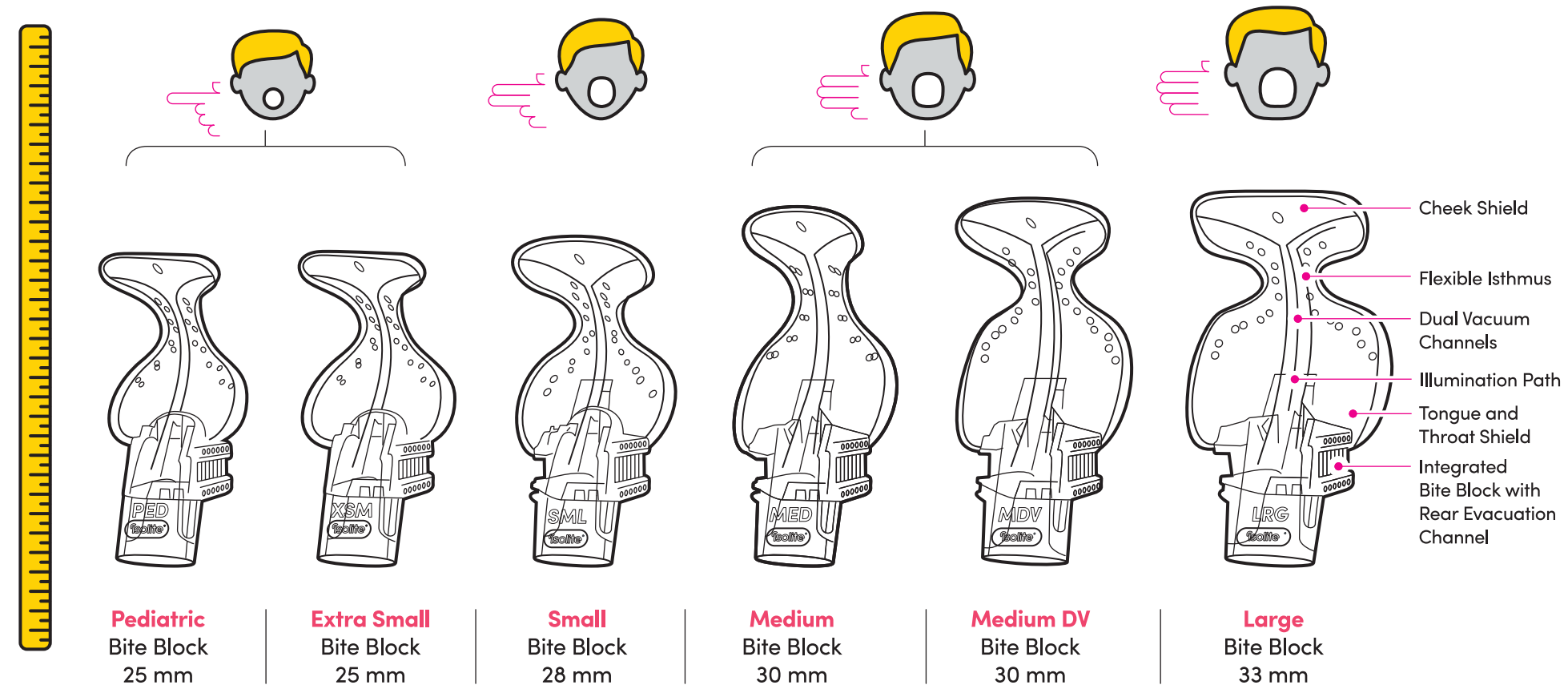


Zyris Isolite Posterior Mouthpieces Sold Separately



VALIDATED STERILIZATION CYCLES

Cycle	Temperature	Minimum Exposure Time	Minimum Drying Time
Standard	132 °C / 270 °F	15 min	15 min
Prevacuum	132 °C / 270 °F	4 min	20 min
Prevacuum	134 °C / 273 °F	3 min	20 min

CONTRAINDICATIONS

No known contraindications. Do not use without reviewing how to select the correct Zyris Isolite® Posterior Mouthpiece size for each patient. Do not use if unable to position the mouthpiece correctly.

SIDE EFFECTS

Use of the Mouthpiece may trigger a pharyngeal reflex (laryngeal spasm) in hypersensitive patients, or if it is not placed correctly within the oral cavity. Contact Zyris for additional placement information if needed.

WARNINGS

- WARNING:** Mouthpieces are single use only. Reuse can result in the transmission of infectious pathogens.
- WARNING:** Mouthpieces must be discarded after use. Mouthpieces cannot be safely sterilized after use. Do not use if the individual mouthpiece bag has been previously damaged or opened. Non-sterile Mouthpieces are individually packaged in polyethylene bags.

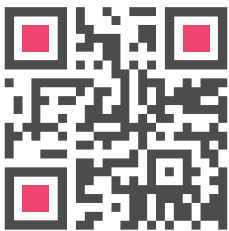
WARNINGS

- WARNING:** Be sure to use established protocols and patient monitoring when using the Mouthpiece in conjunction with sedation dentistry. Patient management by a certified anesthesiologist is strongly recommended.

PRECAUTIONS

- CAUTION:** When performing dental procedures requiring high levels of blood evacuation, it is recommended that our mouthpieces be intermittently flushed with water. This prevents coagulation in the mouthpiece, avoiding loss of suction.
- CAUTION:** Do not autoclave the Control Head at temperatures above 135 °C; higher temperatures could damage components and void your product warranty.
- CAUTION:** Failure to maintain properly lubricated O-rings can result in damage to the Zyris Isolite Core that is not covered by product warranty.
- CAUTION:** With regular use, cleaning, and maintenance, the device is designed to last for years. Check the device for wear prior to use to make sure that it is adequate for use.

Video instructions can be found at:



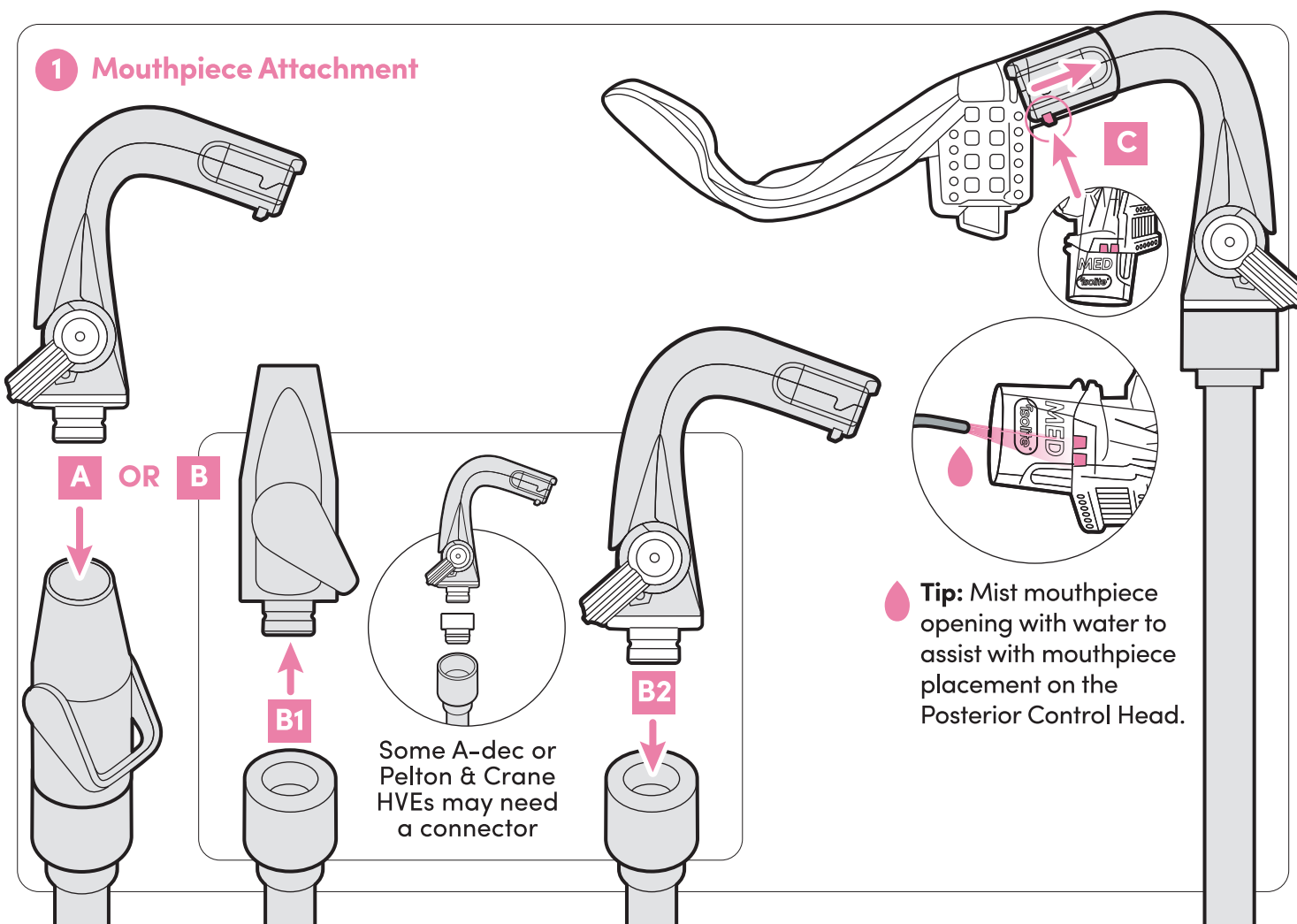
<https://zyr.is/pch>



recyclable paperboard

Limited 1-Year Warranty
<https://www.zyris.com/warranty>

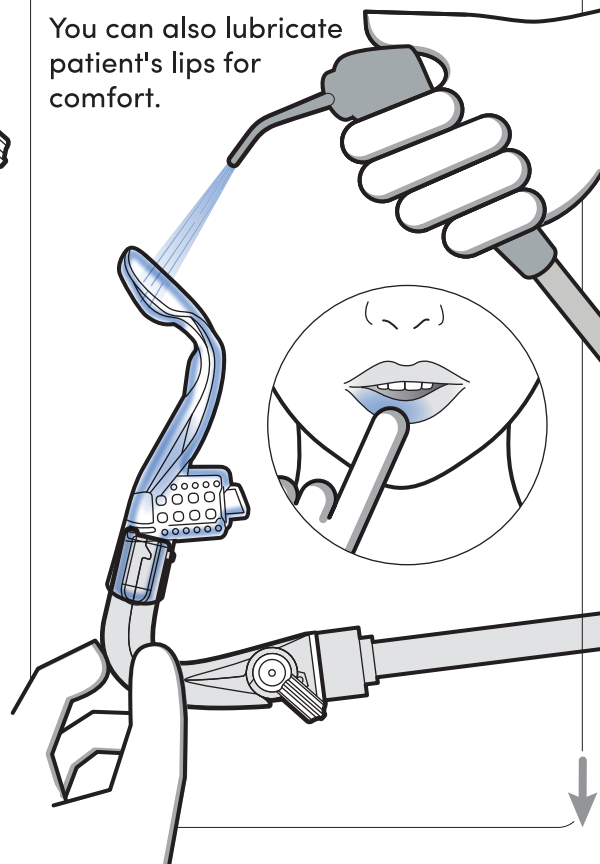
1 Mouthpiece Attachment



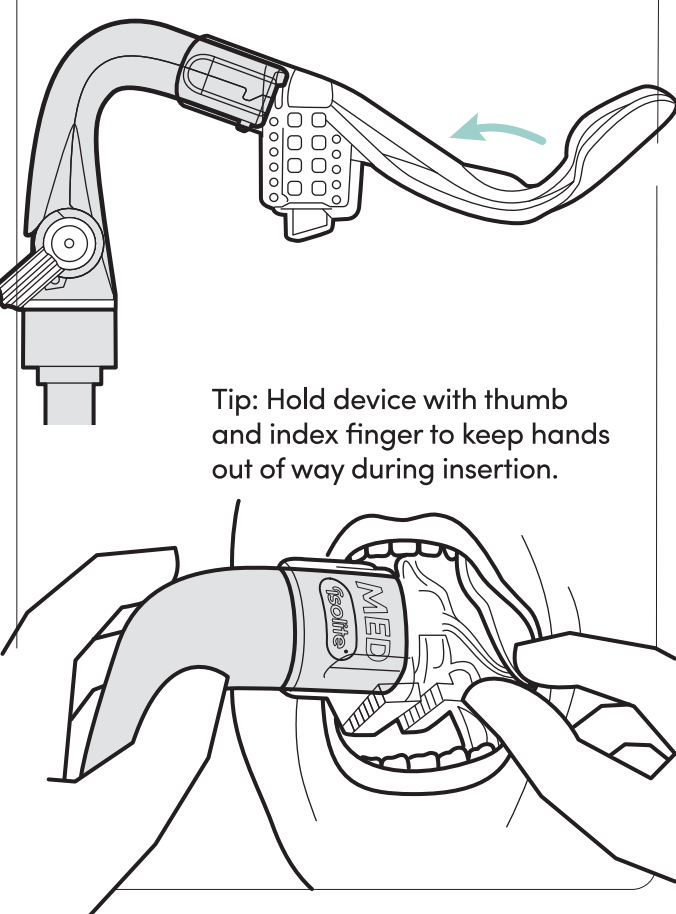
2 Mouthpiece Lubrication

Mist water on the back side of mouthpiece before insertion.

You can also lubricate patient's lips for comfort.

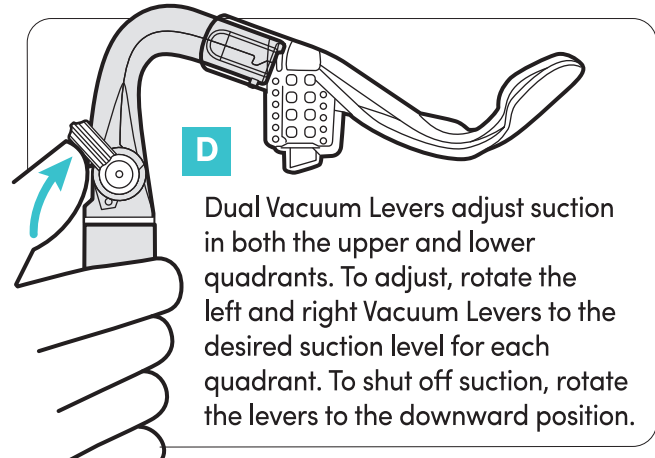
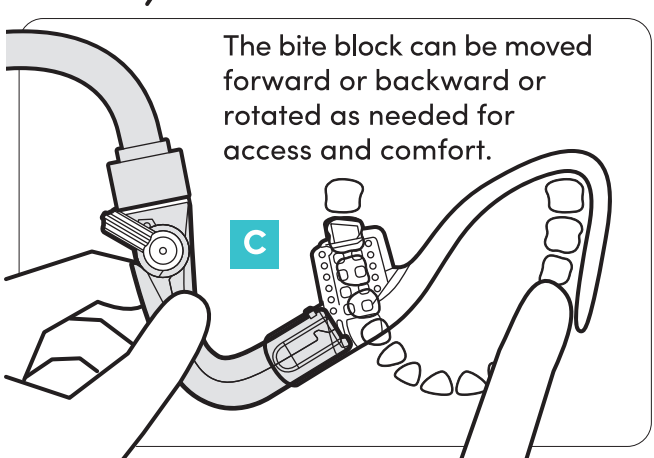
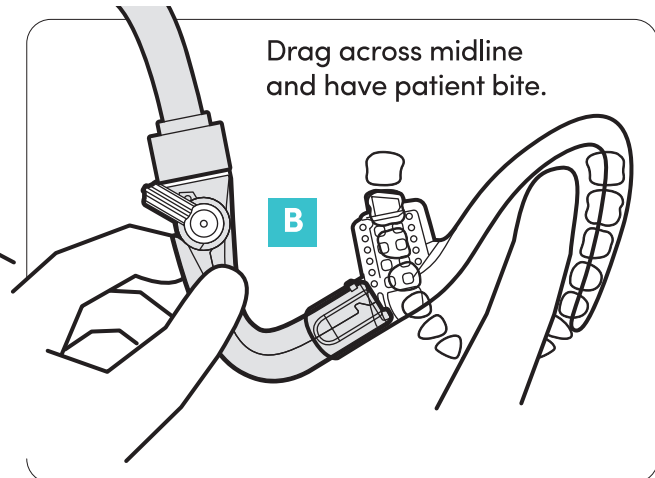
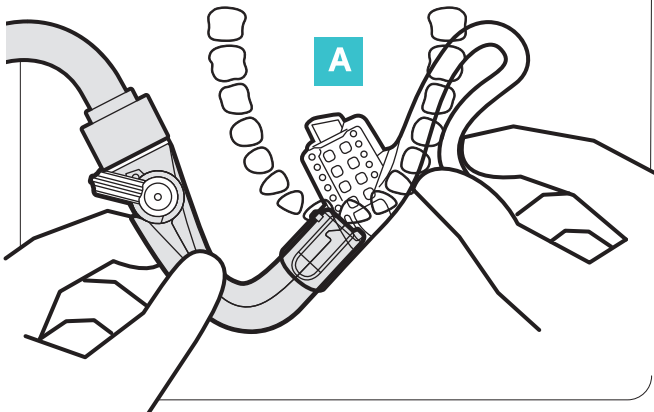


3 Mouthpiece Insertion

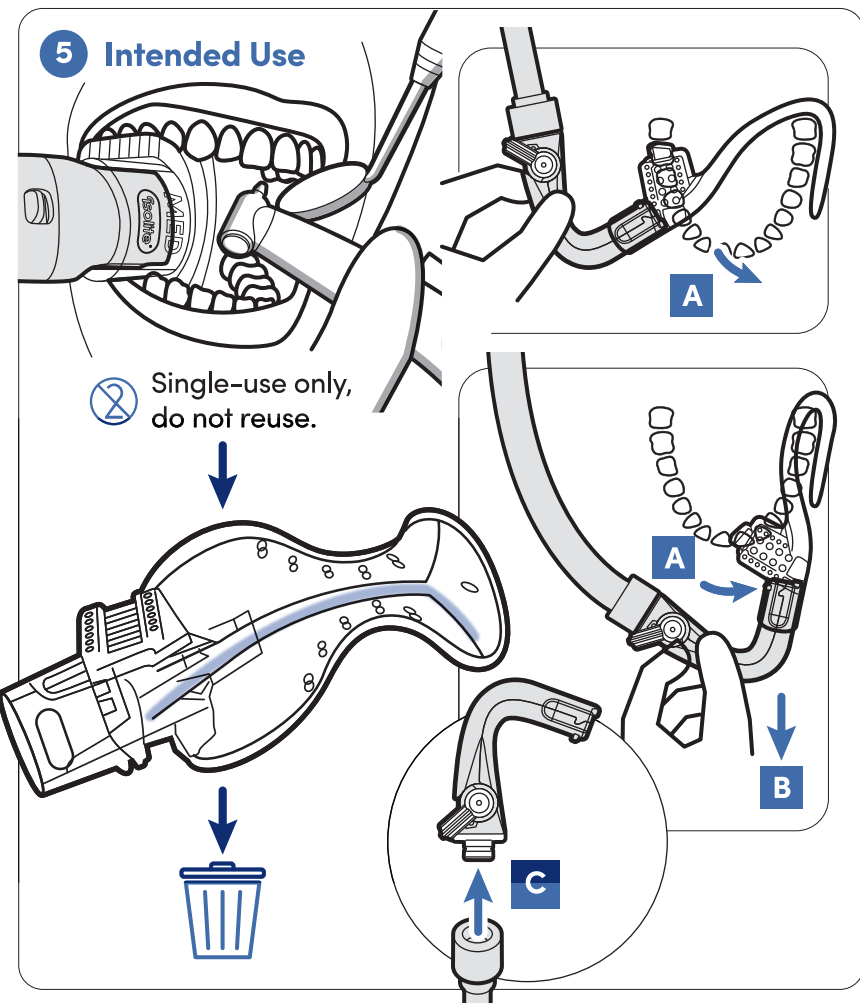


4 Mouthpiece Insertion

Insert into cheek.



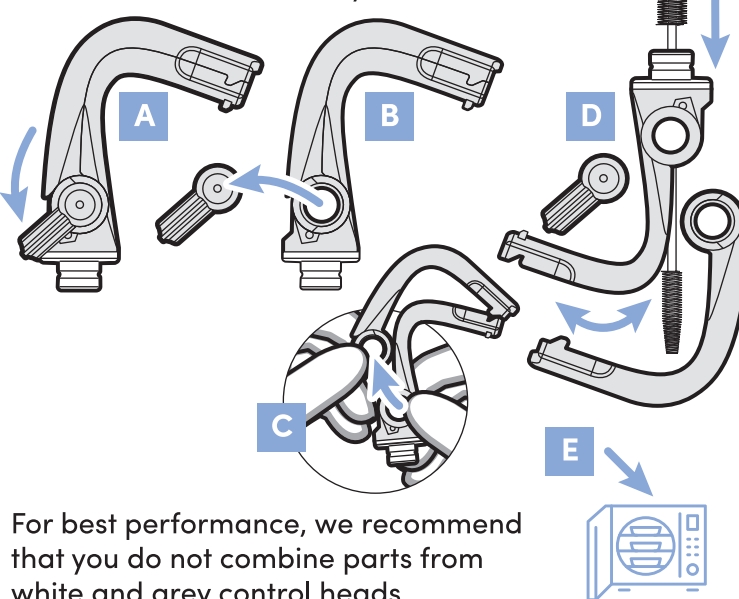
5 Intended Use



6 Cleaning, Disinfection and Sterilization

Cleaning and Sterilization of Posterior Control Head

Zyris recommends cleaning and sterilization of the Posterior Control Head after each patient use. To clean the Posterior Control Head, remove levers and separate (A, B, C). Use brush with enzymatic cleaning solution to remove all visible biomatter (D). Rinse with water and place components in an autoclave pouch to be sterilized. Use validated sterilization cycles.



For best performance, we recommend that you do not combine parts from white and grey control heads.

Periodic Maintenance

Apply provided lubricant to vacuum lever o-rings.

