

Isolite Core+  
Anterior Adapters

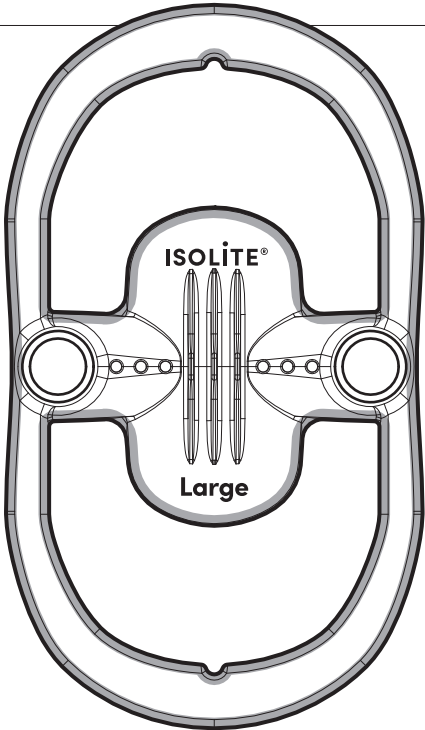
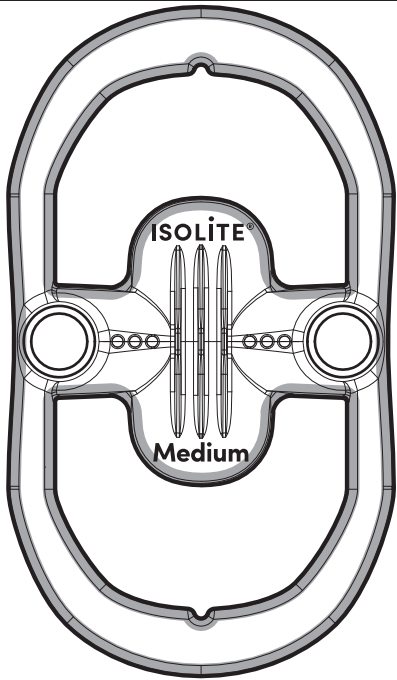
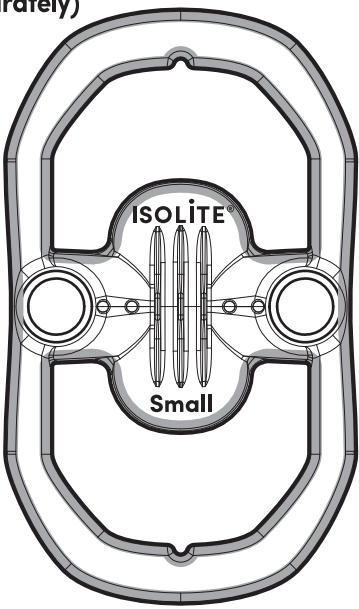
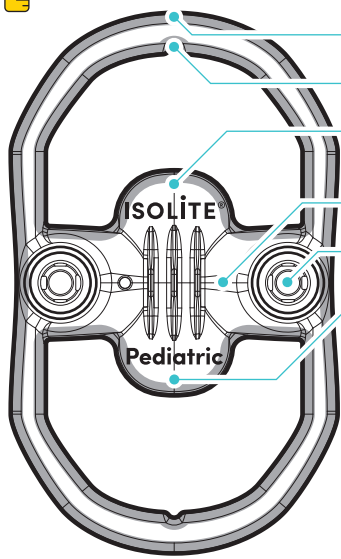


Double-Ended Brush

isolite<sup>®</sup>  
core<sup>+</sup> anterior

Adapter for  
Isolite Anterior Mouthpieces

**Zyris Isolite<sup>®</sup> Anterior Mouthpieces (Sold Separately)**

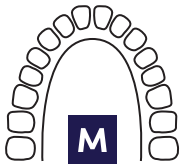


**P**

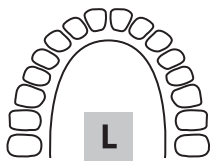
Young children  
(2-7) and adults  
with very small arches  
or limited lip elasticity



Children and adults with  
narrow/v-shaped arches



Larger children and adults with  
average/u-shaped arches



Adults with very wide arches

**VALIDATED STERILIZATION CYCLES**

Cycle	Temperature	Minimum Exposure Time	Minimum Drying Time
Standard	121 °C / 250 °F	30 min	30 min
Standard	126 °C / 259 °F	10 min	30 min
Standard	132 °C / 270 °F	15 min	15 min
Prevacuum	132 °C / 270 °F	4 min	20 min
Prevacuum	134 °C / 273 °F	3 min	20 min

**CONTRAINDICATIONS**

No known contraindications. Do not use without reviewing how to select the correct Zyris Isolite<sup>®</sup> Anterior Mouthpiece size for each patient. Do not use if unable to position the mouthpiece correctly.

**SIDE EFFECTS**

Use of our mouthpiece may trigger a pharyngeal reflex (laryngeal spasm) in hypersensitive patients, or if it is not placed correctly within the oral cavity. Contact Zyris for additional placement information if needed.

**PRECAUTIONS**

**CAUTION:** When performing dental procedures requiring high levels of blood evacuation, it is recommended that our mouthpieces be intermittently flushed with water. This prevents coagulation in the mouthpiece, avoiding loss of suction.

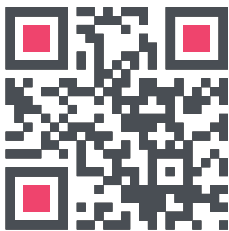
**WARNINGS**

**WARNING:** Zyris Isolite<sup>®</sup> Mouthpieces are single-use only. Reuse can result in the transmission of infectious pathogens. Mouthpieces must be discarded after use. Mouthpieces cannot be safely sterilized after use.

**WARNING:** Do not use if the individual mouthpiece package has been previously damaged or opened. Non-sterile mouthpieces are individually packaged in polyethylene bags.

**WARNING:** Be sure to use established protocols and patient monitoring when using our mouthpieces in conjunction with sedation dentistry. Patient management by a certified anesthesiologist is strongly recommended.

Video instructions can be found at:



<https://zyr.is/aa>



recyclable paperboard

Limited 1-Year Warranty  
<https://www.zyris.com/warranty>

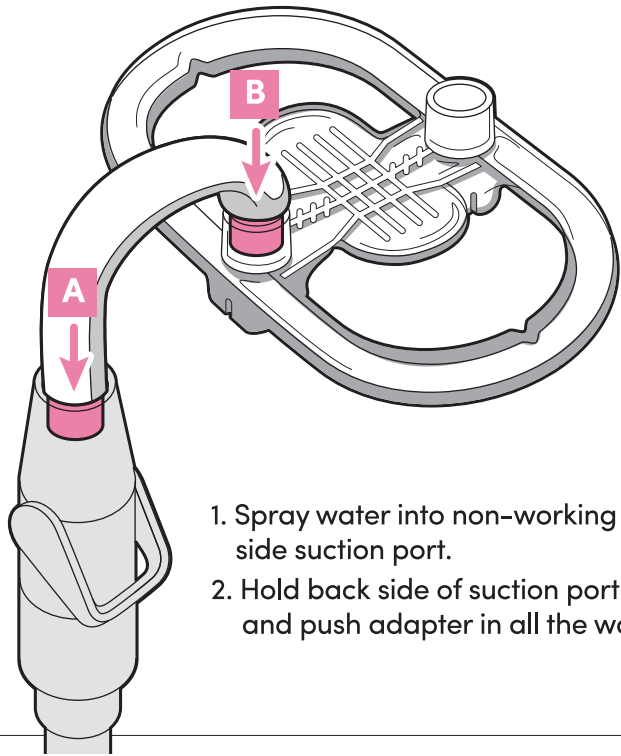
ZYRIS

6868A Cortona Dr  
Santa Barbara, CA 93117  
(805) 560-9888

### 1 Mouthpiece Attachment

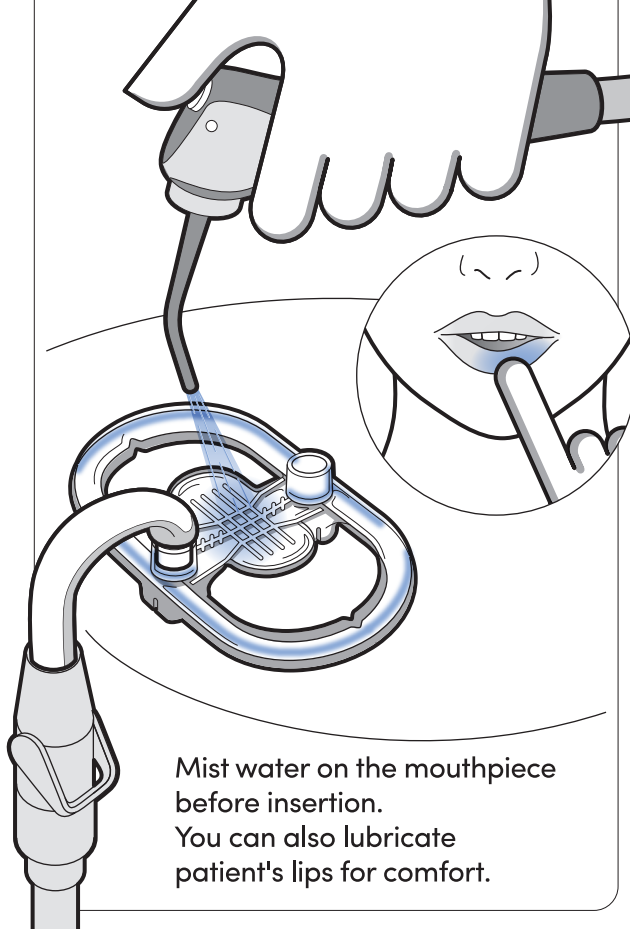
Insert adapter into preferred side of mouthpiece. Press adapter firmly into place.

**Tip:** Mist mouthpiece opening with water to assist with mouthpiece placement on adapter.



1. Spray water into non-working side suction port.
2. Hold back side of suction port and push adapter in all the way.

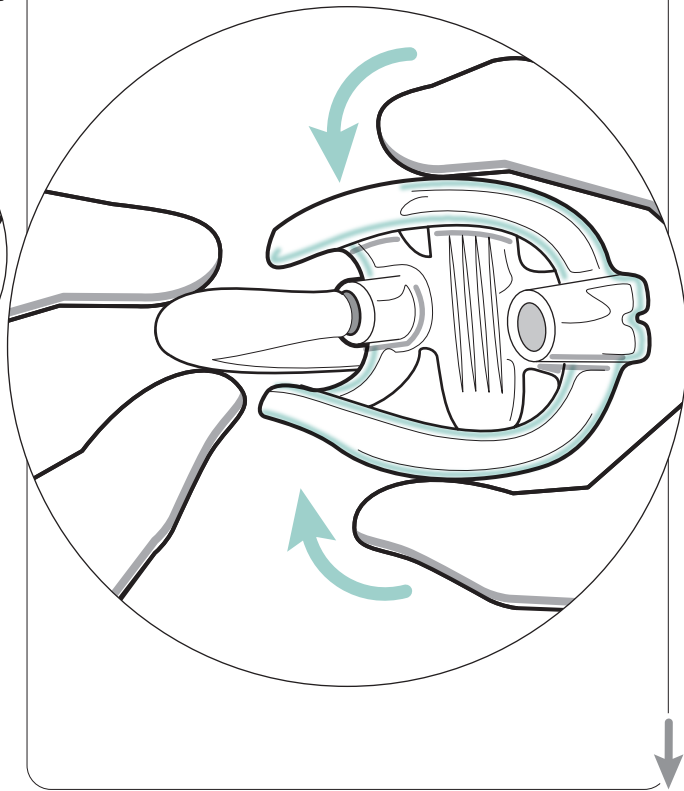
### 2 Mouthpiece Lubrication



Mist water on the mouthpiece before insertion. You can also lubricate patient's lips for comfort.

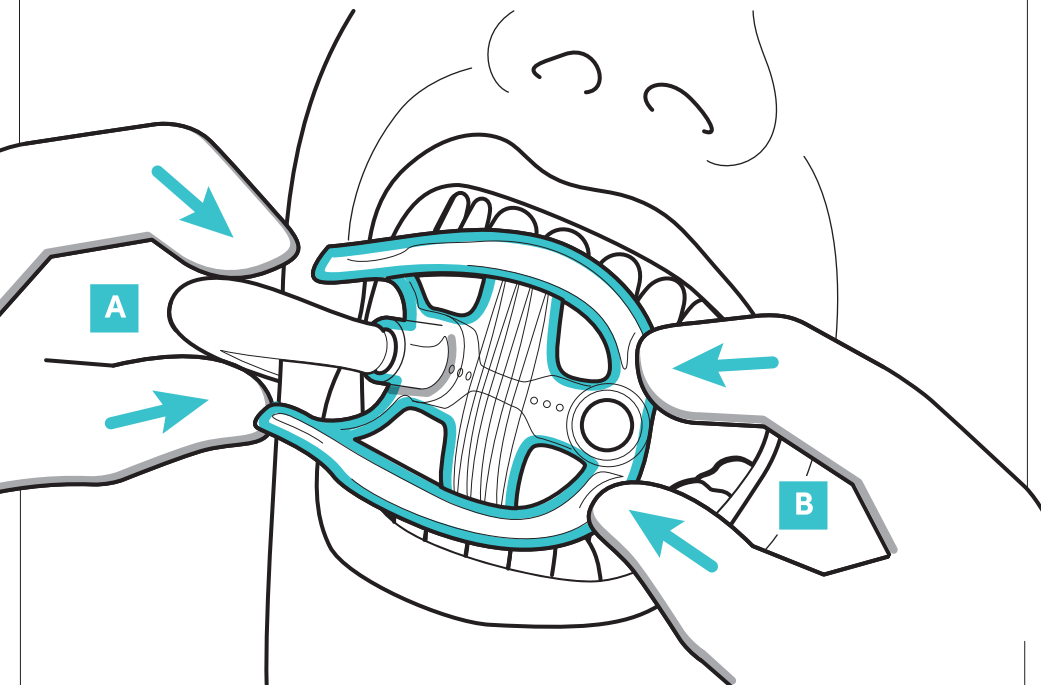
### 3 Mouthpiece Insertion

Hold device in one hand, and fold mouthpiece with your other hand.



### 4 Mouthpiece Insertion

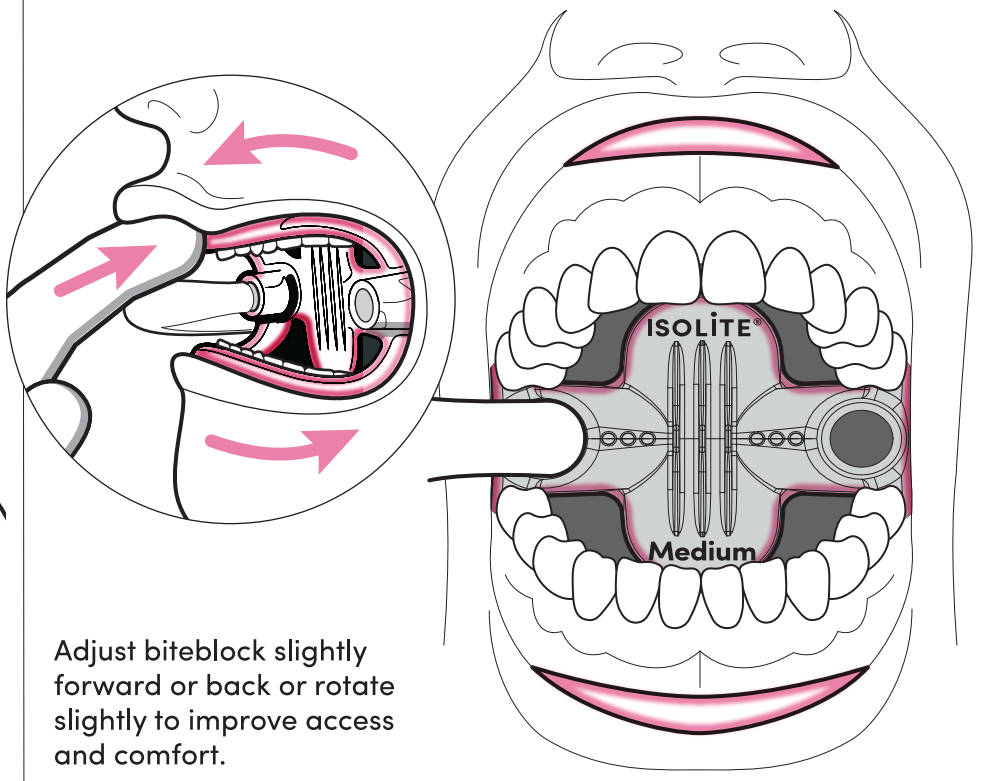
Insert at an angle toward the cheek, by placing one corner of the bite block into the patient's mouth near the patient's first molar.



**C** Once one side is in, keep mouthpiece compressed and place other side on the first molar.

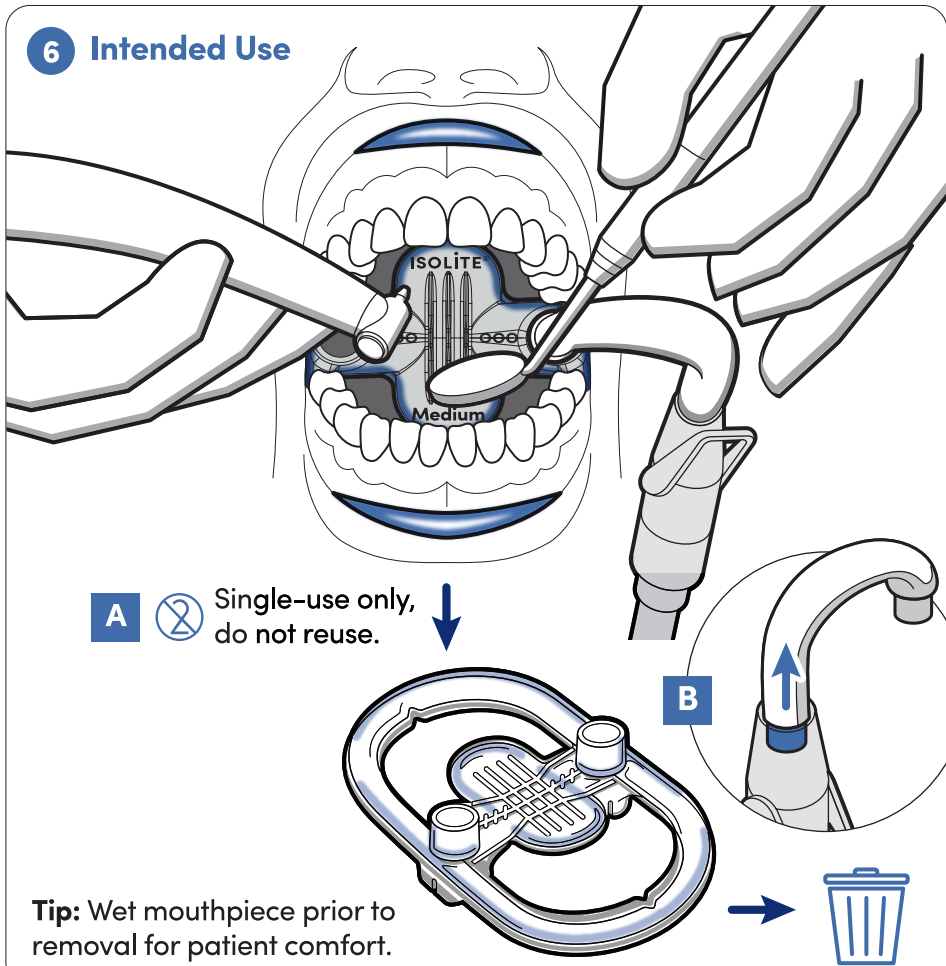
### 5 Mouthpiece Insertion

Have the patient bite down on biteblock to keep in place and using your fingers, sweep around the mouthpiece to secure it in the vestibule.



Adjust biteblock slightly forward or back or rotate slightly to improve access and comfort.

### 6 Intended Use



**A** Single-use only, do not reuse.

**Tip:** Wet mouthpiece prior to removal for patient comfort.

### 7 Cleaning and Sterilization of Anterior Adapter

Zyris recommends cleaning and sterilization of the anterior adapter after each patient use. Separate adapter into two pieces by pulling apart at the seam as indicated below. Use brush with enzymatic cleaning solution to remove all visible biomatter. Rinse with water and place components in an autoclave pouch to be sterilized. Use validated sterilization cycles.

